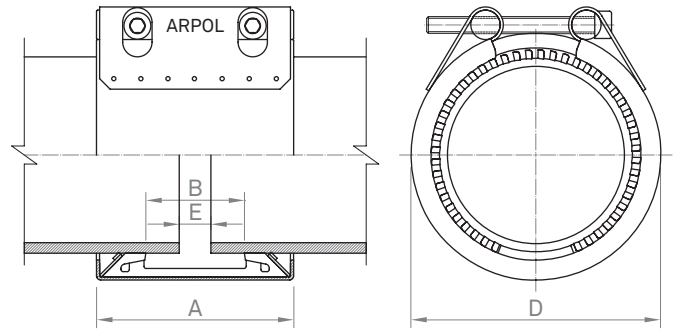


For steel pipe

Serie FIX-L

For the correct operation of the coupling, fitting instructions must be respected.
 Test pressure = 1.5 x PS / PN



	Quality W1		Quality W2		Quality W4		Quality W5	
	AISI	DIN	AISI	DIN	AISI	DIN	AISI	DIN
Casing					304 L	1.4307	316 L	1.4404
Bolts					304	1.4301	316	1.4401
Bars					304 L	1.4307	316 L	1.4404
Inner Steel Bridge (Lock)					304 L	1.4307	316 L	1.4404
Widthring ring					302	1.4310	302	1.4310

Sealing gasket: EPDM / NBR / Silicone

OD	Range	Pressure		Dimensions					Bolts	
		PN psi	PS psi	A in	B in	D in	E ¹ in	E ² in	Diam.	Tor. lbf ft
1.90	1.88 - 1.93	232	507	3.07	1.22	2.68	0.20	0.60	M 8	15
2.125	2.11 - 2.15	232	435	3.07	1.22	2.91	0.20	0.60	M 8	15
2.375	2.35 - 2.40	232	435	3.07	1.22	3.15	0.20	0.60	M 8	15
3.00	2.96 - 3.03	232	290	3.07	1.22	3.78	0.20	0.60	M 8	15
3.50	3.46 - 3.54	232	290	3.70	1.77	4.41	0.20	0.60	M 8	15
4.50	4.46 - 4.54	232	333	3.70	1.77	5.39	0.20	0.60	M 8	15
5.50	5.44 - 5.56	232	232	3.70	1.77	6.42	0.20	0.60	M 8	20
6.00	5.98 - 6.13	232	217	3.74	1.77	7.01	0.20	0.60	M 8	20
6.25	6.20 - 6.32	232	217	3.74	1.77	7.20	0.20	0.60	M 10	25
6.625	6.56 - 6.69	232	203	3.74	1.77	7.52	0.20	0.60	M 10	25
8.625	8.54 - 8.71	203	145	5.55	3.39	9.88	0.60	1.40	M 10	40
9.625	9.53 - 9.72	203	79	5.55	3.39	10.87	0.60	1.40	M 10	40
10.75	10.65 - 10.85	188	65	5.55	3.39	12.01	0.60	1.40	M 10	40
12.75	12.62 - 12.87		43	5.55	3.39	14.02	0.60	1.40	M 12	40
14.00	12.86 - 14.13		36	5.55	3.39	15.24	0.60	1.40	M 12	40
16.00	15.85 - 16.16		29	5.55	3.39	17.24	0.60	1.40	M 12	45
18.00	17.81 - 18.13		29	5.55	3.39	19.25	0.60	1.40	M 12	45
20.00	19.82 - 20.14		21	5.55	3.39	21.26	0.60	1.40	M 12	45
22.00	21.83 - 22.15		21	5.55	3.39	23.23	0.60	1.40	M 12	45
24.00	23.82 - 24.13		14	5.55	3.39	25.24	0.60	1.40	M 12	45

E¹ Permitted gaps without internal band E² Permitted gaps with internal band
 PN Nominal pressure for the shipbuilding industry with safety factor ≥ 4 PS Working pressure OD Outside Diameter Tor. Torque Value

OD	Maximum diameter difference	Maximum angular deflection	Maximum misalignment
in	mil	degrees	mil
1.90	20	4,0	40
2.125 - 2.375	40	4,0	40
3.00 - 3.50	60	4,0	40
4.50 - 6.00	100	4,0	40
6.25 - 8.625	100	2,0	80
9.625 - 24.00	100	2,0	120

See page 5 (Permitted tolerances)