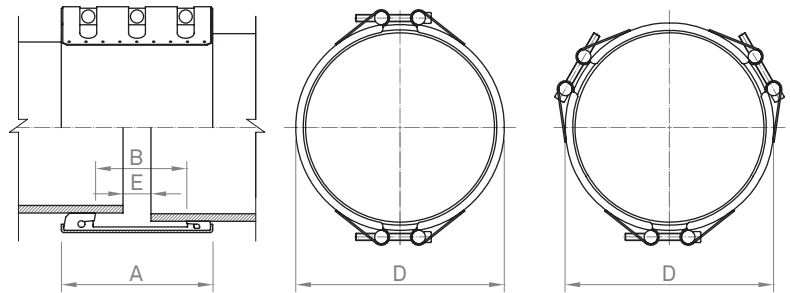


Serie TRANS

For the correct operation of the coupling, fitting instructions must be respected.
 Pressure de prueba = 1,5 x PS



Working pressure up to 10 bar.

Nominal diameter serve as guidance of the pressure scale. All measures within the DN range are manufactured

See dimensions on page 22. Series IBZR to IGZR

	Quality W1		Quality W2		Quality W4		Quality W5	
	AISI	DIN	AISI	DIN	AISI	DIN	AISI	DIN
Casing			304 L	1.4307	304 L	1.4307	316 L	1.4404
Bolts			1035	1.5511	304	1.4301	316	1.4401
Bars			1045	1.0503	304 L	1.4307	316 L	1.4404
Inner Steel Bridge (Lock)			304 L	1.4307	304 L	1.4307	316 L	1.4404

Sealing gasket: EPDM

OD in	TRANS 5				TRANS 10				TRANS 20				TRANS 30			
	2 locks		3 locks		2 locks		3 locks		2 locks		3 locks		2 locks		3 locks	
	$\Delta \emptyset$ min	$\Delta \emptyset$ max	$\Delta \emptyset$ min	$\Delta \emptyset$ max	$\Delta \emptyset$ min	$\Delta \emptyset$ max	$\Delta \emptyset$ min	$\Delta \emptyset$ max	$\Delta \emptyset$ min	$\Delta \emptyset$ max	$\Delta \emptyset$ min	$\Delta \emptyset$ max	$\Delta \emptyset$ min	$\Delta \emptyset$ max	$\Delta \emptyset$ min	$\Delta \emptyset$ max
2.36 - 6.00	consult															
6.25 - 9.05	0.08	0.39														
9.05 - 10.00	0.08	0.39	0.08	0.43												
10.00 - 12.00	0.08	0.39	0.08	0.43	0.20	0.59	0.16	0.63	0.59	0.98	0.55	1.02				
12.00 - 14.00	0.08	0.39	0.08	0.43	0.20	0.59	0.16	0.63	0.59	0.98	0.55	1.02	0.98	1.38	0.94	1.42
14.00 - 20.00	0.08	0.39	0.08	0.47	0.20	0.59	0.12	0.67	0.59	0.98	0.51	1.06	0.98	1.38	0.91	1.46
>20.00	0.08	0.43	0.08	0.51	0.16	0.63	0.08	0.71	0.55	1.02	0.47	1.10	0.94	1.42	0.87	1.50

OD Outside Diameter $\Delta \emptyset$ min minimum difference between outside diameters $\Delta \emptyset$ max maximum difference between outside diameters

OD in	Maximum angular deflection degrees	Maximum misalignment in
1.90 - 6.00	4,0	20,0
6.25 - 20.00	2,0	80,0

See page 5 (Permitted tolerances)